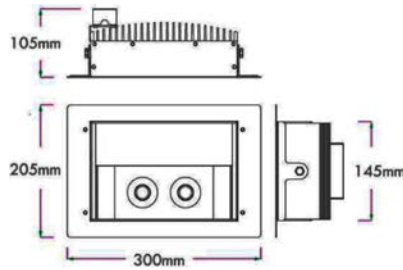


## C25 Specification & Photometric Information

**Model Number:  
C25G**



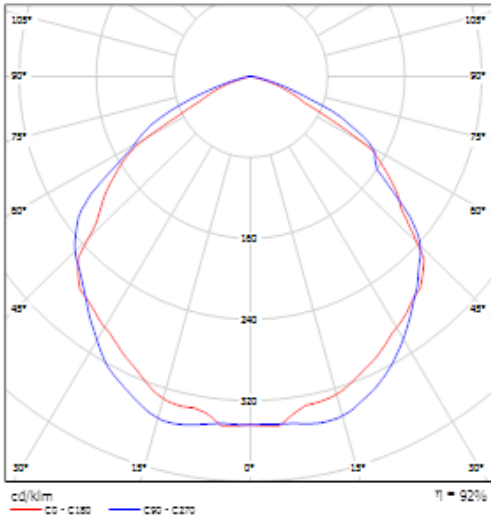
### Specification

| Parameter   | Value                                   | Unit   |
|---|---|--------|
| <b>Electrical</b>   |   |        |
| Input Voltage   | 100~240                                 | Vac    |
| Power consumption   | 25                                      | W      |
| Power Factor  | 99.6                                    | %      |
| <b>Output (lumen out put are from CREE LED chip manufacturer)</b> |   |        |
| Beam Angle  | 15/24/30/50/60/90/130/135               | degree |
| True Lumen output (TW)  | 2500                                    | lm     |
| (NW)  | 2200                                    | lm     |
| (WW)  | 1800                                    | lm     |
| Lumen maintenance   | 50,000                                  | hours  |
| <b>Physical</b>   |   |        |
| Weight  | 4.4                                     | lb     |
| Lens  | Tempered Glass                          |        |
| Operating Temperature   | -40~50                                  | C      |
| Operating Environment   | 0-95% non-condensing                    |        |
| <b>Chipset</b>  |   |        |
| Chip  | CREE XPG                                |        |
| Total numbers of LEDs   | 10                                      | pieces |
| CRI   | 80                                      |        |
| Correlated Color Temperature (CCT)                                | 5,000~10,000 (Typ. 6,000)               | k      |
| (TW)  |   |        |
| (NW)  | 3,700~5,000 (Typ. 4,300)                | k      |
| (WW)  | 2,600~3,700 (Typ. 3,000)                | k      |
| <b>Certification and Safety</b>                                   |   |        |
| Certifications  | ETL,CE,FCC,LVD,RoHS, Laser              |        |
| Safety  | Not for use in totally enclosed fixture |        |
| Warranty  | 3                                       | years  |

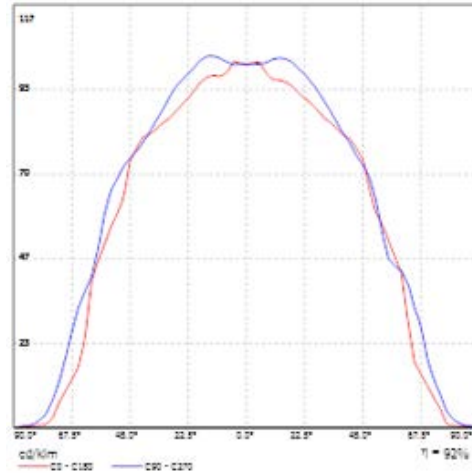
## Luminaire Data

### 130 degree beam angle

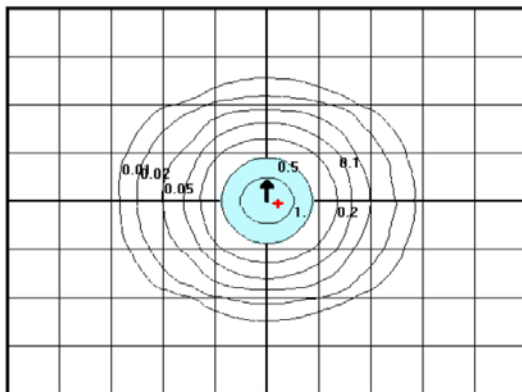
#### 1. Polar Diagram



#### 2. Linear Diagram



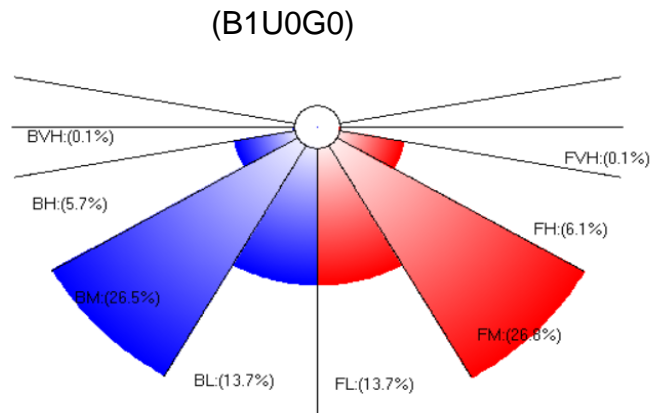
#### 3. ISO-Illuminance



| Mounting Height | Multiplier |
|-----------------|------------|
| 10              | 4.000      |
| 15              | 1.778      |
| 20              | 1.000      |
| 25              | 0.640      |
| 30              | 0.444      |
| 35              | 0.327      |
| 40              | 0.250      |
| 45              | 0.198      |
| 50              | 0.160      |

Shade Limit:  
 0.5 fc.  
 Shaded Area:  
 970 sq.ft.  
 \* = Point of max candela

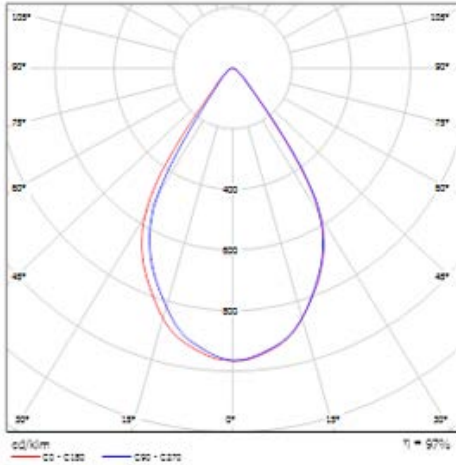
#### 4. LCS Graph-BUG Rating



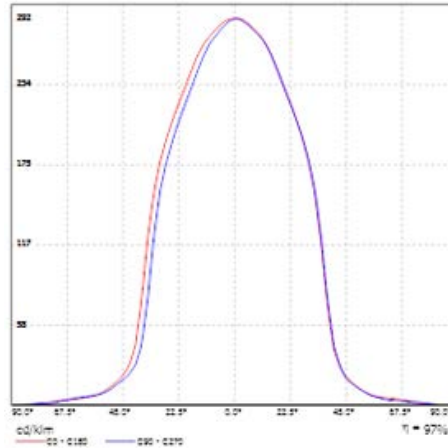
## Luminaire Data

### 60 degree beam angle

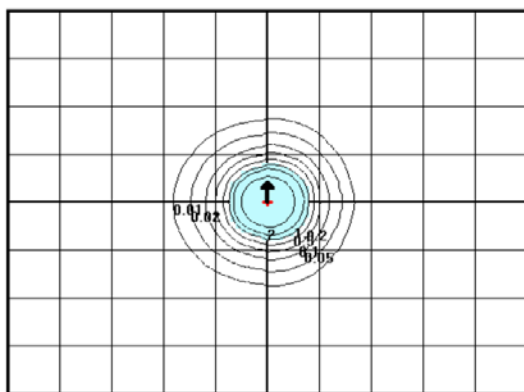
#### 1. Polar Diagram



#### 2. Linear Diagram



#### 3. ISO-Illuminance



| Mounting Height | Multiplier |
|-----------------|------------|
| 10              | 4.000      |
| 15              | 1.778      |
| 20              | 1.000      |
| 25              | 0.640      |
| 30              | 0.444      |
| 35              | 0.327      |
| 40              | 0.250      |
| 45              | 0.198      |
| 50              | 0.160      |

Shade Limit:  
0.5 fc.

Shaded Area:  
784 sq.ft.

++ = Point of max candc

#### 4. LCS Graph-BUG Rating

(B2U0G0)

